

# FOOTPRINTS

Bethel Lutheran Church Believe—Belong—Become

*"Your word is a lamp for my feet, a light on my path." Psalm 119:105*

**IN THIS ISSUE:**

*Pastor's column*

*Profile*

*Symbols*

*Youth in Action*

*The NALC*

*Seasons & Holy Days*

*Church Music*

*Focus on Ministry*

*And more . . .*



**I tell you a mystery. We shall not all sleep, but we shall all be changed, in a moment, in the twinkling of an eye, at the last trumpet. For the trumpet will sound, and the dead will be raised imperishable, and we shall be changed." 1 Corinthians 15:50**



# FOOTPRINTS



ON THE COVER:  
I Corinthians 15:50  
Pixabay

# FOOTPRINTS

## Issue # 14

With the name **FOOTPRINTS**, we honor our commitment to walk in the steps of our Lord and Savior Jesus Christ leaving a legacy for others to follow. At the same time, we look back and acknowledge the Bethel believers and our own personal *cloud of witnesses* who have gone before us leaving their footprints of faith for us to follow. We hope our humble efforts give Glory to God and provide enlightenment, entertainment, and knowledge to our readers. God bless you all!

† † †

Bethel's **vision** is to be a dynamic, life-changing church of fully devoted disciples of Jesus Christ.

† † †

Bethel's **mission** is to engage the curious, encourage the convinced, and empower the committed to be fully devoted disciples of Jesus Christ.

† † †

### PoWeR SuRge

Pray daily  
Worship regularly  
Read Scripture daily  
Serve others  
Relate to other Christians in Faith  
Give of your financial resources

† † †

### Editorial Board:

Gay Hanson (Editor in Chief), Pastor Doug Gast, Pastor Dave Hill, Carole Kuhn, Trudy Kussow, John Patterson, and Pastor Al Schoonover.

*Photos are public domain (such as from Pixabay), belong to Bethel, or are used by permission of the photographer. Clipart is original or used under license from ChurchArt.com. Puzzles are used with permission of biblepuzzles.org.uk/biblepuzzles.com. Original material © 2021 Bethel Lutheran Church.*

# CONTENTS

	PASTOR'S COLUMN	3
	PROFILE: PASTOR DAVE HILL	4
	LIFE-TO-LIFE DISCIPLESHIP	5
	STATIONS OF THE CROSS	6
	YOUTH IN ACTION PRESCHOOL SILENT AUCTION	8
	THE BUTTERFLY SYMBOL OF EASTER	9
	NALC DEVOTED TO PRAYER PROGRAM	10
	ASK THE PASTOR	11
	SEASONS & HOLY DAYS	12
	LUTHERAN CHRISTIANS	13
	CHURCH HISTORY	14
	CHURCH MUSIC	15
	CHRISTIAN EDUCATION	16
	NALC MISSION CONNECT	18
	BOOKS OF INTEREST	19
	WORD PLAY	20
	CALENDAR & EVENTS	22
	WORSHIP TIMES	24





# SEASON OF LENT 2021

## PASTOR'S COLUMN

### A GREAT RETURN . . . WELL WORTH IT.

Dear Brothers and Sisters in Christ,

Return to the  
**LORD**  
your God, for He is  
gracious and merciful,  
slow to anger, and  
abounding in  
steadfast love  
*Joel 2:13*

I don't know if it is still true, because I haven't been in a retail store for some time now, but I remember there used to be a counter tucked in the back of most stores with a sign that read "RETURNS." There was usually a person manning the counter ready to receive return

items from customers. It seemed there was always a line of people who didn't want what they had bought or what had been given to them. I always felt sorry for the people who were working the return counter. They heard the complaints, the excuses, and the reasons for all the unwanted and unsuitable things from generally unhappy customers.

Can I let you in on a little quirk or idiosyncrasy of mine? I hate to return stuff that I have bought. I'd rather stuff it in a drawer, stick in the back of a closet, or stash it on some shelf somewhere rather than take it back to the store. This might be a basic difference between men and women. My aversion to returning stuff exasperates my wife Terri who is the queen of returning. She will buy four or five outfits for the grandkids and bring them home and then make a decision on whether to keep them or whether they fit or whether the kids will like whatever she has bought.

Can I let you in on a grace-filled quirk of God? God is the "King of Returns." He loves when we return thanks, when we return good for evil, when we return with songs of joy and praises. But He loves it best when people return to Him.

There are so many distractions, so many things that happen in daily life that separate us from God, so many temptations that pull us away from God, and so many other demands on our time and attention that we, all of a sudden, realize how far we have gotten from God's priorities and values in our life. Life has a way of drifting. It is easy to have an unconscious relationship with God, and discover one day how far we have drifted apart.

Lent has been part of the church calendar for hundreds of years. It's an extended time to take stock of our lives and our relationship with God. It is so easy to drift from God,

to slide in our devotion and time with God. It is so easy to put God on the back burner while we attend to "More Important Things." It is why Lent is one of the most important seasons of the church year. It is a time to reorient our lives to God-honoring ways. It is a time to question whether we are living our lives in a way that pleases and glorifies God. It is a time to repent for all the things that are tripping us up.

Like any good, strong, and close relationship, we need to be paying attention to the well-being of the relationship. And we need to pay close attention to God in order for us to be healthy.

Our Lenten theme this year is "Return to the Lord." But in reality that is the theme of every Lent. Sometimes when we look inside ourselves we can be shocked at how things aren't as they should be. Joel's plea is for the people to return to God. God's forgiveness and blessings are available only to those who turn to Him. Maybe that will lead us to godly sorrow that can lead to real repentance, turning from the way life has been going and turning back to God's opening and waiting arms.

Sometimes people are afraid to return to God . . . maybe He'll be too angry. Maybe He has run out of patience. Maybe He has run out of chances for me. Maybe it would be easier to keep going the way I have been and try to hide and stay away.

One of the most memorable and enduring stories of Jesus is the parable of the prodigal son. When the son comes to his senses he decides to return home . . . return to his father. And the son was stunned when his father welcomed him, embraced him, and threw him a party. I would say that is abounding, grace-filled, and steadfast love. What a beautiful and life-changing return it was. God is gracious and compassionate, slow to anger and abounding in love.

So Lent gives us the space and time to really examine our hearts and lives and make a conscious decision to return to the Lord our God knowing that His arms are always outstretched, always ready to embrace each of us when we come to Him in faith, love and real repentance.

Yours in Christ,

*Pastor Doug*





# PROFILE:

## *Pastor Dave Hill & Family*

By Pastor Dave



*Pastor Dave & Anna Marie (front)  
Ryan and Christopher (back)*

Pastor Dave grew up in Michigan as the third of six siblings (4 boys & 2 girls) and is a life-long Lutheran. After graduating from high school, he attended Concordia Lutheran College (now University) in Ann Arbor, Michigan, where God led him through a few area of study changes until it was made plain that God wanted him to get into the Pre-ministerial Program. After four years of study, he received a Bachelor's degree in Religion/Psychology-Sociology. Then, following both God's lead and that of his older brother Mark, he attended Concordia Lutheran Seminary in St. Louis, Missouri where, after four years, he received his Masters in Divinity Degree.

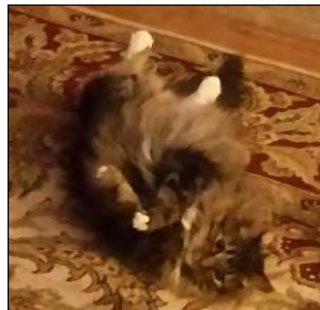
Pastor Dave was blessed by God to serve three churches at the same time in Texas — his first call into Pastoral ministry. Since then, he's served single churches in New Jersey, California, Ohio, and now Indiana. While in New Jersey, Pastor Dave also served as a volunteer Chaplain to the EMT Squad of the City of Bloomfield and was a

firefighter and Chaplain for the fire department in the City of Maywood. While in California, he served as a volunteer Chaplain for the Los Angeles County Sheriff's Station in Temple City. While interning at Zion Lutheran Church in Clark, New Jersey during his third year of seminary training, God blessed Dave with the love of his life, his "Jersey Girl", Anna Marie. They were joined in Holy Marriage on July 15<sup>th</sup> in 1983.

Once upon a time, Anna Marie was a Fashion Illustrator for the Newark Star Ledger newspaper in Newark, New Jersey. But after God called her into early childhood education, she has served as a Preschool Teacher in both Clark and Paramus, New Jersey. She has also served as a Preschool Teacher in Temple City and as a Director of a Church After-School Program in Glendora, California.

Anna Marie and Pastor have been blessed by God with two boys: Christopher and Ryan. Christopher lives in New Jersey and serves as an honored "front-line worker" and dispatcher for a police department and as a volunteer firefighter. Ryan is a college student who lives at home and is pursuing a Bachelor's Degree in Meteorology by way of The Ohio State and Ball State Universities.

The Hill family also has some furry members of their family that they love and enjoy — two cats: Milani and Mick.



*Milani*



*Mick*

The Hills enjoy music of all kinds — especially Christian music and musicians. They also love to garden and landscape. They love horses, horse riding, and horse racing. And they love to entertain people.



Their address is 5178 Aegis Drive in the New Havenwood of Noblesville Community which is located off Hinkle Road and to the west of Little Chicago Road.



*Pastor Dave's Installation at Bethel:  
Anna Marie, Pastor Dave, & Ryan Hill*



*Pastor Dave's Installation at Bethel:  
Pastor Al Schoonover, Seminarian Ben Black,  
Dean Pam Thorson, Pastor Dave Hill &  
Pastor Douglas Schoelles*



NALC  
**life-to-life**  
DISCIPLESHIP

**Imagine** what it would be like, and what Jesus would do through us in the North American Lutheran Church (NALC) if we collectively renewed our commitment to our Lord's commission to make disciples, and if we together reaffirmed our desire to become the fulfillment of his commandment that we love one another as He has loved us?

**Imagine** what might happen, if every pastor and every congregation and every member in our church body made this same personal commitment to be living witnesses to and for our risen Lord Jesus?

Our **vision** is that the NALC will reclaim the confessional Lutheran emphasis on ongoing catechesis and intentional faith formation in the life of all of its congregations. This same disciple-making identity will permeate every NALC congregation, be adopted by every NALC pastor, and become part of our church body's DNA.

Our **vision** also includes becoming known to the ecumenical community as a church body that takes seriously its calling to make disciples and intentionally cultivates a framework to do so in its congregations.

Do you think this renewal could happen in your congregation and community? *Jesus did*, or He would not have gathered you together and placed you where you are. Do you think this life-changing transformation could happen in your family and in your own personal life? *Your Lord must have thought it could*, or He would not have called you as he has.

For more information on the NALC's Life-to-Life Discipleship go to: [nalclifetolife.org](http://nalclifetolife.org).



# STATIONS OF THE CROSS

Assembled by Carol Jacobs

## The Stations of the Cross

The Stations of the Cross, also called the Way of the Cross, tells the story of Jesus' walk to Calvary along the Via Delarosa. It is intended as a spiritual pilgrimage in which the faithful, alone or with others, can walk, pray, and meditate of the sufferings of Jesus leading to His crucifixion for our redemption.

The station tradition began in the time of the Crusades in the 12<sup>th</sup> and 13<sup>th</sup> Centuries. Though the number of stations varied from 30 to 5, today's tradition was fixed at 14 by Pope Clement XII in 1731. While most of the stations have a scriptural basis in the Gospels, five are based on traditions. The falls of Jesus in Stations 3, 7, and 9 are not attested by Scripture but are plausible given all night interrogations, scourging, and blood loss. Jesus' encounter with Mary at Station 4 expands the encounter at the Cross. The woman wiping Jesus' face at Station 6 likely comes from the veil bearing Jesus' image. The veil has been kept at the Vatican since the 8<sup>th</sup> Century. While the authenticity of the veil may be debated, the Station represents that in loving one another, we bear the true image of Jesus.

As we walk from station to station, we meditate and pray at each scene of Jesus' passion guided by Scripture.



### Station One – Jesus is Condemned to Death

Matthew 27:11-14, 24, 26b

Meanwhile Jesus stood before the governor, and the governor asked him, "Are you the king of the Jews?"

"You have said so," Jesus replied. When he was accused by the chief priests and the elders, he gave no answer. Then Pilate asked him, "Don't you hear the testimony they are bringing against you?" But Jesus made no reply, not even to a single charge—to the great amazement of the governor.

When Pilate saw that he was getting nowhere, but that instead an uproar was starting, he took water and washed his hands in front of the crowd. "I am innocent of this man's blood," he said. "It is your responsibility!" But he had Jesus flogged, and handed him over to be crucified.



### Station 2 – Jesus Carries His Cross

Matthew 27:27-31; John 19:17

Then the governor's soldiers took Jesus into the Praetorium and gathered the whole company of soldiers around him. They stripped him and put a scarlet robe on him, and then twisted together a crown of thorns and set it on his head. They put a staff in his right hand. Then they knelt in front of him and mocked him. "Hail, king of the Jews!" they said. They spit on him, and took the staff and struck him on the head again and again. After they had mocked him, they took off the robe and put his own clothes on

him. Then they led him away to crucify him. Carrying his own cross, he went out to the place of the Skull (which in Aramaic is called Golgotha).



### Station 3 – Jesus Falls the First Time

Isaiah 53:3

He was despised and rejected by mankind, a man of suffering, and familiar with pain. Like one from whom people hide their faces he was despised, and we held him in low esteem.



### Station 4 – Jesus Meets His Mother

Luke 2:34-35; Romans 12:15-16

Then Simeon blessed them and said to Mary, his mother: "This child is destined to cause the falling and rising of many in Israel, and to be a sign that will be spoken against, so that the thoughts of many hearts will be revealed. And a sword will pierce your own soul too."

Rejoice with those who rejoice; mourn with those who mourn. Live in harmony with one another. Do not be proud, but be willing to associate with people of low position. Do not be conceited.



### Station 5 – Simon of Cyrene Helps Jesus Carry the Cross

Matthew 27:32

As they were going out, they met a man from Cyrene, named Simon, and they forced him to carry the cross.



### Station 6 – Veronica Wipes the Face of Jesus

Psalms 27:8-9

My heart says of you, "Seek his face!"  
Your face, LORD, I will seek.  
Do not hide your face from me,  
do not turn your servant away in anger;  
you have been my helper.  
Do not reject me or forsake me,  
God my Savior.



### Station 7 – Jesus Falls A Second Time

Isaiah 53:4-6

Surely he took up our pain and bore our suffering, yet we considered him punished by God, stricken by him, and afflicted. But he was pierced for our transgressions, he was crushed for our iniquities; the punishment that brought us peace was on him, and by his wounds we are healed. We all, like sheep, have gone astray, each of us has turned to our own way; and the LORD has laid on him the iniquity of us all.

# — PEACE TRAIL IMAGES



## Station 8 – Jesus Speaks to the Weeping Women

Luke 23:27-28

A large number of people followed him, including women who mourned and wailed for him. Jesus turned and said to them, “Daughters of Jerusalem, do not weep for me; weep for yourselves and for your children.



## Station 9 – Jesus Falls a Third Time

Isaiah 53:7-8, 9b

He was oppressed and afflicted, yet he did not open his mouth; he was led like a lamb to the slaughter, and as a sheep before its shearers is silent, so he did not open his mouth.

By oppression and judgment he was taken away.

Yet who of his generation protested?

For he was cut off from the land of the living; for the transgression of my people he was punished. He had done no violence, nor was any deceit in his mouth.



## Station 10 – Jesus is Stripped of His Garments

Matthew 27:33-35

They came to a place called Golgotha (which means “the place of the skull”). There they offered Jesus wine to drink, mixed with gall; but after tasting it, he refused to drink it. When they had crucified him, they divided up his clothes by casting lots.



## Station 11 – Jesus is Nailed to the Cross

Matthew 27:36-43

And sitting down, they kept watch over him there. Above his head they placed the written charge against him: THIS IS JESUS, THE KING

OF THE JEWS.

Two rebels were crucified with him, one on his right and one on his left. Those who passed by hurled insults at him, shaking their heads and saying, “You who are going to destroy the temple and build it in three days, save yourself! Come down from the cross, if you are the Son of God!” In the same way the chief priests, the teachers of the law and the elders mocked him. “He saved others,” they said, “but he can’t save himself! He’s the king of Israel! Let him come down now from the cross, and we will believe in him. He trusts in God. Let God rescue him now if he wants him, for he said, ‘I am the Son of God.’”



## Station 12 – Jesus Dies on the Cross

Matthew 27:45-54

From noon until three in the afternoon darkness came over all the land. About three in the afternoon Jesus cried out in a loud voice, “Eli, Eli, lema sabachthani?” (which means “My God, my God, why have you forsaken me?”).

When some of those standing there heard this, they said, “He’s calling Elijah.”

Immediately one of them ran and got a sponge. He filled it with wine vinegar, put it on a staff, and offered it to Jesus to drink. The rest said, “Now leave him alone. Let’s see if Elijah comes to save him.”

And when Jesus had cried out again in a loud voice, he gave up his spirit.

At that moment the curtain of the temple was torn in two from top to bottom. The earth shook, the rocks split and the tombs broke open. The bodies of many holy people who had died were raised to life. They came out of the tombs after Jesus’ resurrection and went into the holy city and appeared to many people.

When the centurion and those with him who were guarding Jesus saw the earthquake and all that had happened, they were terrified, and exclaimed, “Surely he was the Son of God!”



## Station 13 – Jesus is Taken Down from the Cross

John 19:30-37

When he had received the drink, Jesus said, “It is finished.” With that, he bowed his head and gave up his spirit.

Now it was the day of Preparation, and the next day was to be a special Sabbath. Because the Jewish leaders did not want the bodies left on the crosses during the Sabbath, they asked Pilate to have the legs broken and the bodies taken down. The soldiers therefore came and broke the legs of the first man who had been crucified with Jesus, and then those of the other. But when they came to Jesus and found that he was already dead, they did not break his legs. Instead, one of the soldiers pierced Jesus’ side with a spear, bringing a sudden flow of blood and water. The man who saw it has given testimony, and his testimony is true. He knows that he tells the truth, and he testifies so that you also may believe. These things happened so that the scripture would be fulfilled: “Not one of his bones will be broken,” and, as another scripture says, “They will look on the one they have pierced.”



## Station 14 – Jesus is Placed in the Tomb

Matthew 27:57-61

As evening approached, there came a rich man from Arimathea, named Joseph, who had himself become a disciple of

Jesus. Going to Pilate, he asked for Jesus’ body, and Pilate ordered that it be given to him. Joseph took the body, wrapped it in a clean linen cloth, and placed it in his own new tomb that he had cut out of the rock. He rolled a big stone in front of the entrance to the tomb and went away. Mary Magdalene and the other Mary were sitting there opposite the tomb.

Let us pray:

*Lord Jesus, let me find hope in your dying my death, that from this moment on I might live your life. Amen.*

# PRESCHOOL ART SHOW & SILENT AUCTION



The Bethel Lutheran Preschool and P.D.O. Program will be breaking from the tradition we've had for several years, and we will not be having a Spaghetti Dinner & Silent Auction. We decided last year, after our Spaghetti Dinner and before Covid-19 hit, that we would not be continuing the Spaghetti Dinner this year. We are trying some new fundraisers this year. One was our **U Paint Pottery**, which was well received. Another will be an **Art Show & Silent Auction**. We had looked into cookie dough, pizzas, sub sandwiches and pulled pork, but due to Covid-19, we decided to put a pin in those until a more manageable time has been reached for health reasons.



Our very first **Bethel Lutheran Preschool and P.D.O. Program's Art Show & Silent Auction** will be April 17<sup>th</sup> through 18<sup>th</sup>, 2021. This is after Easter and area schools' Spring Breaks but before Mother's Day. The proceeds from our past

Silent Auctions have helped to keep the Preschool in the black financially, purchase cameras for classroom use, much needed consumable supplies, more science items for the curriculum, books, general upkeep of our current equipment, and more.

If you would like to donate an item for the Spring Auction, please contact Laura Houser 317-773-4315 ex 33 or at [laura@bethellutheranchurch.com](mailto:laura@bethellutheranchurch.com). We appreciate your support to make our fundraiser a success!

This year we are looking to continue to support the Preschool in terms of purchasing updated curriculum items, maintaining our financial status in the black and to put a portion of our proceeds toward

upgrades to the church's playground. We have been asking for a sun sail for the playground for the past few years and would love to be able to purchase one. The playground is due for new mulch and in need of some playground equipment for smaller aged children. Ideally, we would love for the new mulch to be of the rubber variety for safety reasons and for the sustainability of it. As it stands now, we truly need new mulch every other year. 2020 was a mulch year but that did not get to happen. The playground could use a sprucing up with some additional mulch yearly to help even out the spread and to maintain the proper density for safety.

Currently Aidan Biddle, a high school sophomore youth here at Bethel and a Boy Scout working toward his Eagle Scout badge has been raising funds to replace the existing fence around the playground and to extend it out to encompass the Nursery and Preschool Sunday School Classroom doors. This would allow for both the Nursery and the Sunday School Classes to be able to enjoy the playground more easily and make bathroom visits and overall accessibility to the playground with fewer steps a reality. Aidan's project is raising funds for the fence only. You can bless this project by writing in the Memo line of your check "Aidan Biddle Eagle Scout Project" and placing your contribution in the offering plate.

Please consider blessing the church through both of these areas. A safe & improved playground is a huge blessing for the entire church. Did you know when a family with kids visits the church for the first time, they look carefully at the playground, areas kids will play at, and the Youth and Family areas of the church? They look to see how safe their children will be and what value is placed on those areas by the church.

Keep a look out for Registration for the 2021-2022 school year, as it will be opening for current Bethel Lutheran Preschool & P.D.O. families and Bethel Lutheran Church members, February 16th, 2021.

In His Love,  
Laura Houser  
Bethel Lutheran Church  
Preschool Director  
317-773-4315 ex 33  
[Laura@bethellutheranchurch.com](mailto:Laura@bethellutheranchurch.com)

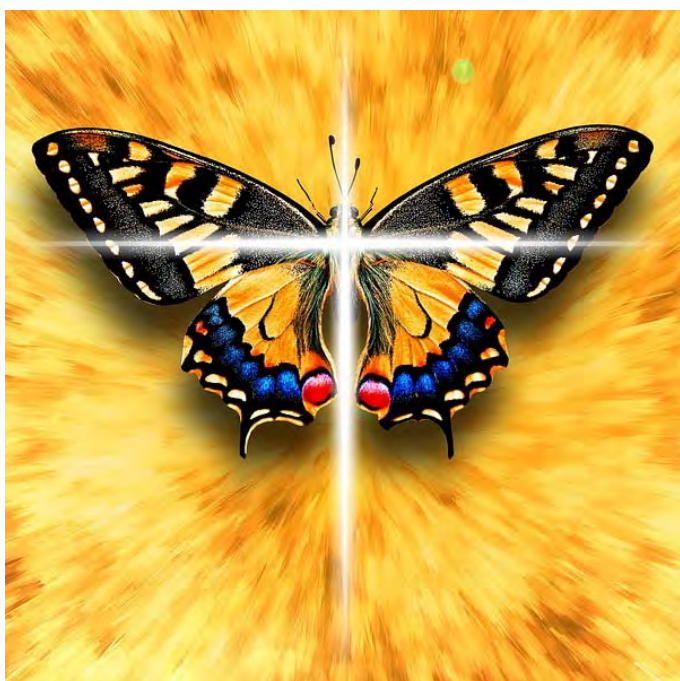


# THE BUTTERFLY SYMBOL OF EASTER

By Gay Hanson

**I tell you a mystery. We shall not all sleep, but *we shall all be changed*, in a moment, in the twinkling of an eye, at the last trumpet. For the trumpet will sound, and the dead will be raised imperishable, and we shall be changed.”**

*I Corinthians 15:50*



The butterfly has long been a symbol of the Resurrection and Easter.

The three stages of a butterfly's life are symbols of Resurrection, and therefore, Easter. In George Ferguson's book, "**Signs and Symbols in Christian Art**," he talks about the butterfly as a symbol of the Resurrection. He explains, "The butterfly is sometimes seen in paintings of the **Virgin and Child**, and is usually in the Child's hand. It is a symbol of the Resurrection of Christ. In a more general sense, the butterfly may symbolize the resurrection of all men. This meaning is derived from the three stages in its life as represented by the caterpillar, the chrysalis, and the butterfly, which are clearly symbols of life, death, and resurrection."

The caterpillar's non-stop eating reminds us of our earthly life where we are often preoccupied with taking care of our physical needs. It is symbolic of Jesus' life on earth when He shared the human form and its physical needs.

Caterpillars "entomb" themselves in what appears to be a lifeless cocoon. This symbolizes Jesus' choice to be crucified, die for our sins, and be buried. The caterpillar disappears into the cocoon and appears dead, but emerges later far more beautiful and powerful than it was before.

The third and last stage is the appearance of a butterfly with beautiful, colored wings and the ability to soar high on the wind. This represents the Resurrection into a new and glorious life – a rebirth.

Paul's teachings, as illustrated by the quotation above from I Corinthians 15:50, tells us that believers will also be changed and reborn, and in I Corinthians 15:22, that "as in Adam all die, so in Christ all will be made alive." Christians will follow Jesus from this human life through death into Resurrection. That is our hope and His promise, so what better symbol of the Resurrection, besides the cross, is there than the butterfly!



# NALC PRAYER CALENDAR



## What is the *Devoted to Prayer* program?

At the beginning of 2021, the NALC launched a new two-year daily prayer and reading calendar called *Devoted to Prayer*.

This daily prayer and Bible reading guide is based on Acts 2:42 and was conceived and prepared by the Rev. Andrew S. Ames Fuller, director of communications for the North American Lutheran Church (NALC). After a challenging year in the midst of the COVID-19 pandemic, the NALC is providing an opportunity to revitalize the ancient practice of daily prayer and Scripture reading in our homes. While the *Reading the Word of God* three-year lectionary provided a much-needed and refreshing calendar for our congregations to engage in Scripture reading, this calendar includes a missing component of daily devotion: prayer.

This guide is to provide the average layperson and pastor with the simple tools for sorting through the busyness of their lives and reclaiming an act of daily discipleship with their Lord. The daily readings follow the *Lutheran Book of Worship* two-year daily lectionary, which reflect the church calendar closely. The commemorations are adapted from Philip H. Pfatteicher's *New Book of Festivals and Commemorations*, a proposed common calendar of the saints that builds from the *Lutheran Book of Worship*, but includes saints from many of those churches in ecumenical conversation with the NALC. The hope is that this calendar and guide will provide new life for congregations learning and re-learning to pray in the midst of a difficult and changing world.

## Introduction

The 17th-century Anglican bishop Jeremy Taylor famously said, “Pray frequently and effectually; I had rather your prayers should be often than long.” *Devoted to Prayer* is a devotional aid to help you build a habit of more regular and purposeful prayer, with daily Scripture readings and reflections from the lives of saints who have gone before. It is arranged in the Lutheran prayer tradition and suitable for all Christians seeking a deeper relationship with God. This guide includes three times of prayer (Morning, Evening, Close of Day) for every day of the year. Traditionally, these prayers were observed at set times:

**Morning**—upon waking, or with breakfast;  
**Evening**—at end of work day, or with dinner;  
**Close of Day**—before sleep, or when the family retires.

Using *Devoted to Prayer* does not require you to pray all three times a day. You should choose a frequency of prayer that is suitable to your growth as a disciple of Jesus. Many who use this book may only pray twice a day at times most convenient for them. Begin where you are.

**For more information, go to:**  
<https://thenalc.org/worship-resources/devoted-to-prayer-introduction/>

**To download the calendar in PDF format, go to:**  
<https://thenalc.org/wp-content/uploads/2021/01/Devoted-to-Prayer-2021-2022.pdf>



# ASK THE PASTOR



## IS THERE SOMETHING YOU ALWAYS WANTED TO ASK?

By Pastor Al Schoonover

Q

### Who Chooses?

I was struggling this week to discern a question for this issue of *FootPrints*. Nothing came to mind from any recent conversations I'd had with you, so I went to the bucket used by the *Ask the Question* adult class to see if any of their questions struck a chord. Sure enough, there were several good ones, but I liked this one best:

***Are some people chosen to be evil by God for a purpose (i.e., Pharaoh)?***

Great question! Your mileage may vary, but I hear two other questions within this one that we must tackle to “answer” it fully:

Does God choose some to be evil  
and others to be good?

Does God choose people for  
a particular purpose?

Let's start with the second question. We don't have to read the Bible very long before we come across examples of God choosing individuals and even countries to accomplish His purposes. For instance, God chose Noah and his family to preserve the human race (Genesis 6-9). God chose to work through Sarah and Abraham and their descendants to bless the world with God's loving presence (Genesis 12:1-3). God chose prophets like Elijah, Isaiah, Jeremiah (and others) to bring the people back to God when they had strayed. God even chose non-believers and the countries they led to be instruments of divine judgment (Babylon under Nebuchadnezzar) and reprieve (the Persians under Darius and Cyrus) for Israel. And we mustn't forget the disciples – Jesus chose them to create a community of believers who would share the message of God's saving love revealed in Jesus' life,

death, and resurrection. No, by itself, God's choosing humans for a particular purpose isn't troubling (although the person being chosen by God sometimes feels a little unsettled along the way).

As we transition to the first question, let's remember Paul's words to the Romans: “And we know that for those who love God ***all things*** work together for good, for those who are called according to his purpose.” (8:28, ESV) “All things” means both the good and the bad. God doesn't ***cause*** these things to happen to us, but God can use any circumstance or event to bring about God's desired outcome.

I'm reminded of Joseph's experience in Genesis 37-50. He went through tremendous trials and heartache between the time of being taken from his family and sold into slavery and his eventual reunion with this family after becoming second in command to Pharaoh. When he meets his brothers after this long separation, they thought he might retaliate against them for selling him into slavery. Instead, he told them: “As for you, you meant evil against me, but God meant it for good, to bring it about that many people should be kept alive, as they are today.” (Genesis 50:20, ESV)

Which brings us to the first question: Does God choose some to be evil and others to be good? I don't believe so. God creates all things, including all people, as good. This is the final refrain from Genesis 1 after creation was complete: “And God saw everything that he had made, and behold, it was very good.” (Genesis 1:31, ESV) Now, after the fall in Genesis 3 and the break in our relationship with God, sin touches us even before birth: “For I was born a sinner— yes, from the moment my mother conceived me.” (Psalm 51:5, NLT) This brokenness is true for each of us: “for all have sinned and fall short of the glory of God.” (Romans 3:23, ESV)

*Continued on page 18.*



# SEASONS & HOLY DAYS

## TRIDUUM

By Carole Kuhn

In our Lutheran communities, Holy Week has more worship services than any other week of the Christian year. Other denominations also celebrate with extensive services that week, but some with a different emphasis in certain areas. We do not consider what is known as the Paschal (Easter) **Triduum** a separate "season" but as part of the Lent and Easter festival.

Triduum (Trid-yoo-uhm) is a Latin word for "Three Days" and begins with the liturgy on the evening of Maundy Thursday and ends with prayer on Easter Sunday. Other terms referring to this time include Easter Triduum or the Paschal Triduum. We celebrate those days during Holy Week as a portion of Lent and Easter. It is one of the oldest Christian traditions and some describe those three days/evenings as "excitement building each day."

Maundy (or Holy) Thursday we have an evening service remembering the Last Supper when Jesus spent time with his followers, washing their feet and asking them to "Love one another as he has loved us." That day is also remembered as the Passover. At the end of the service, the altar is stripped and everyone leaves in silence...no blessing.

Good Friday is the second day of the Triduum, and this service also ends in silence as we contemplate Jesus' crucifixion...giving his life for us.

Easter...and we joyfully celebrate his resurrection...our "liberation." (20<sup>th</sup> chapter of gospel of John)

Some denominations celebrate those three days, and other "Triduum" times during the church year as separate occasions.



After taking the cup, he gave thanks and said, "Take this and divide it among you. For I tell you I will not drink again from the fruit of the vine until the kingdom of God comes."

And he took bread, gave thanks and broke it, and gave it to them, saying, "This is my body given for you; do this in remembrance of me."

In the same way, after the supper he took the cup, saying, "This cup is the new covenant in my blood, which is poured out for you."

*Luke 22: 15-20 (NIV)*

And they crucified him.

With a loud cry, Jesus breathed his last.

The curtain of the temple was torn in two from top to bottom. And when the centurion, who stood there in front of Jesus, saw how he died, he said, "Surely this man was the Son of God!"

*Mark 15: 24, 37-39 (NIV)*

On the first day of the week, very early in the morning, the women took the spices they had prepared and went to the tomb. They found the stone rolled away from the tomb, but when they entered, they did not find the body of the Lord Jesus. While they were wondering about this, suddenly two men in clothes that gleamed like lightning stood beside them. In their fright the women bowed down with their faces to the ground, but the men said to them, "Why do you look for the living among the dead? He is not here; he has risen!"

*Luke 24:1-6 (NIV)*



# LUTHERAN CHRISTIANS

## WHO WE ARE - WHAT WE BELIEVE

By Pastor Dave Hill

### FREQUENTLY ASKED QUESTIONS ABOUT LENT

#### **Q: What is the significance of Lent?**

**A:** Early in the Church's history, the major events in Christ's life were observed in special ways: His birth, baptism, death, resurrection and ascension. As these observances developed, a period of time was set aside prior to each. So, prior to the events of Jesus' death, resurrection, and ascension, there's a time of preparation called the season of Lent.

During Lent, worship is all about being repentant. The color for the season is purple, a color often associated with repentance. Hymns of praise are omitted. The word "Alleluia" isn't spoken until Easter. So, the Lenten season is clearly a distinct time, and there's a powerful contrast with the festive celebration of Jesus' resurrection when alleluias ring loud and clear. Join us at Bethel for weekly worship services each Sunday and Wednesday of Lent 2021!

Finally, repentance isn't the sole purpose of Lent. In the ancient Church, the weeks leading up to Easter were a time of preparation for people who were to be baptized at the Easter Vigil on Holy Saturday. Lent was seen as an especially appropriate time for Baptism because of the relationship between Christ's death and resurrection and our own in Holy Baptism (*see Romans 6:1-11*). So, Lent is not only as a time to meditate on Christ's suffering for us, but it's also an opportunity to reflect on our own baptism and what it means to live as a child of God.

#### **Q: Do we have to *give up* something for Lent like some other denominations require?**

**A:** This is entirely up to an individual Christian. It's wrong for the church to require its members to do this since the Bible doesn't require it. On the other hand, if one wants to do this as a way to remember and personalize the sacrifice that Christ made on the cross for their sins, then they're free to do so—as long as they don't judge or look down on others who don't.

#### **Q: What is the significance of Ash Wednesday and ashes on the forehead?**

**A:** This ancient act is a gesture of repentance and a powerful reminder of the meaning of the day. Ashes symbolize "dust-to-dustness" and remind us of our need for spiritual cleansing and are shared with those who come forward in true repentance and humility before God. The ashes come from the burned palms of Palm Sunday so, like sin, they're very dirty! The Pastor takes the ashes on the end of his/her thumb and makes the sign of the cross on the forehead of each worshiper, saying: "*Remember: you are dust, and to dust you shall return.*" And this takes place after the Confession and Absolution of sin.

If you have any more questions, please don't hesitate to ask them! I'm here for you!

Pastor Dave

# CHURCH HISTORY

## REFORMERS

By Jill Dietz

### Johannes Gutenberg – Participant in the Reformation



Johannes Gutenberg lived from about 1400 to 1468. He was born in the German city of Mainz. His birth year is not known, but it was between 1394 and 1404. In the 1890's, the city of Mainz declared his birth date to be June 24, 1400.

He was a goldsmith, inventor, printer, publisher and made the first printing press with movable type. His press started the printing revolution and played a key role in the Renaissance, the Age of Enlightenment, the Scientific Revolution, and the Reformation.

Most of his early life is a mystery, but in 1411, there was an uprising in Mainz, which caused the Gutenbergs to move to Eltville am Rhein. Although nothing is known about his life for the next 15 years, a letter written by him in March, 1434, indicates he was living in Strasbourg.

Johannes developed the movable type, oil-based ink used for books, adjustable molds, and the use of the wooden printing press. In 1439, his epic invention was putting all of these together



into one system that allowed for mass production of printed materials, and this process was economical for both the printer and the reader. This printing press



brought in the era where mass communication altered all of society. Revolutionary ideas were now being circulated, in a largely unrestricted way across borders, economic divisions, language barriers and threatened the power of political and religious authorities. The increase in literacy changed society as it broke the monopoly the elite had on education and brought the middle class into the light.

In 1440, Johannes is thought to have introduced his secret way of printing to the public. He moved back to Mainz in 1448. In 1450, he convinced Johann Fust to loan him 800 guilders (\$439.60 today). Fust's son-in-law, Peter Schoffer also joined this venture.

Although it's unknown where he conceived the idea of printing the Bible, he borrowed another 800 guilders from Fust, and he started the work on the Bible in 1452. The press was also printing lucrative texts at the same time. Some believe that there were 2 presses – one for the texts and one for the Bible.



1455 was a banner year for Gutenberg. He completed the Gutenberg Bible with an unprecedented 42 lines on each page. Copies sold for 30 florins each (\$16.30 today), which was 3 years' wages for an average person. This was significantly cheaper than a hand written Bible that could take a scribe over a year to prepare. The first printing of the Bible was 180 copies, mostly on paper, some on vellum. 40 mostly complete copies are known to survive with two being at the British Library and can be viewed on line. The Gutenberg Bible was the first printed edition of the Bible and is lauded for its high aesthetic and technical quality.



In 1456, Gutenberg and Fust had a dispute and Fust demanded his money back. The two loans, with 6% interest, now amounted to 2,026 guilders (\$1,128.59 today). The courts decided in favor of Fust, giving him

control over the Bible printing workshop and half of all the printed Bibles. This left Gutenberg bankrupt, but he restarted a small printing shop and participated in the printing of the Bible in the town of Bamberg in 1459, where he at least provided the type for it.

Gutenberg died in 1468 and was buried in the Franciscan church in Mainz. This church and cemetery were later destroyed, and Gutenberg's grave is now lost.

Years after the debut of his printing press, Gutenberg was a huge factor in the Reformation. In 1517, Luther's *95 Theses* were printed and widely circulated. Without the press, the masses would not have been able to read the *Theses* that started the Reformation.

Gutenberg is considered one of the most influential people in human history and is listed at #8 in a 1978 book that lists the top 100 influential people in history. In 1999, A&E Network listed him as #1 and in 1997, *Time Life* magazine picked Gutenberg's printing press as the most important invention of the second millennium.





# CHURCH MUSIC

## LENT/EASTER HYMNS & SONGS

By Suzy Patterson

### ***Lord Let me Walk that Lonely Road with You***

By Jack Miffleton

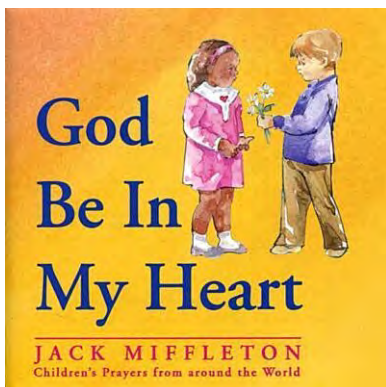


This hymn/song was written by Jack Miffleton, an American composer and Roman Catholic priest (at the time of writing song). This piece was included in his *From Earthenware Jars* album in 1975. Miffleton wrote this for a Good Friday service.



*"From Earthenware Jars" album cover*

Miffleton also became a children's educator.



*One of Miffleton's children's books*

Stop for a few minutes and let the words of the song sink in. Its message is powerful and "right on"!

Our own Mike Musick has sung this song at the 5:30 Lenten services for several years.

### ***Lord Let me Walk that Lonely Road with You***

By Jack Miffleton



Lord let me walk that lonely road with you  
Under the weight of the wood  
Lord, let me walk that last mile in your shoes  
Under the weight of the wood.

*Refrain* Freedom can be found laden down  
Under the weight of the wood

Lord let me cool your lips baked like clay  
Under the weight of the wood  
Dried up like rain on a hot and dusty day  
Under the weight of the wood.

*Refrain*

They gave you gall and sour wine for your food  
Under the weight of the wood  
Father, forgive them they don't know what they do  
Under the weight of the wood

*Refrain*

Lord must the journey always end this way  
Under the weight of the wood  
How many times have we nailed you up today  
Under the weight of the wood.

*Refrain*

# CHRISTIAN

## CHILDREN AND YOUTH



### SUNDAY MORNING

**Sunday School** — Sunday School for children ages Kindergarten through 12th grade begins at 10:00 a.m. Students in all classes go to their assigned classrooms. Parents may pick up their children from the classroom at 10:55 a.m.

**Nursery** — Because of COVID and out of an abundance of caution for our youngest disciples and their families, we are unable to offer a staffed nursery currently. We will evaluate this monthly and reinstitute this important ministry as soon as it is feasible.

### Preschool-Kindergarten

— Children who turn 3 years old before December 31st and those in Kindergarten are invited to join our Preschool-Kindergarten Sunday School Class at 10:00 a.m. Gospel Light Curriculum teaches children Bible lessons in a fun, age-appropriate way, with engaging songs, stories, videos and puppets!

**1st-5th Grade** — Children are grouped into Sunday School classes by age/grade. Over a three-year cycle, students learn the basic stories and Lutheran concepts in preparation for Confirmation during Middle School. The curriculum used is "Sunday Schoolhouse" from Sola Publishing.

**High School** — We explore various topics of mutual interest, seeking to apply our faith to real-life situations and challenges; to move beyond the accumulation of more head knowledge, into the arena of faith application and growing as disciples. We begin class each week sharing at least one good thing from the past week. We encourage conversation and discussion in a respectful manner. We encourage active serving while reminding them of the little eyes looking up to them here at church. We end each class with prayer requests and prayer.



### Confirmation

Confirmation class for Middle School students (grades 6-8) strives to move faith from the head to the heart through a highly interactive experience that includes both large group presentation and small group discussion. Following class, we attend worship together. Once a month, we will continue our time together after worship with a large group fellowship activity. Our goal is to develop a sticky, life-long faith through a combination of engaging learning events, regular fellowship activities, and frequent service opportunities in and beyond the congregation. Join us in the Fellowship Hall. Contact Pastor Al for more registration information.



### MIDWEEK:

### High School Youth Ministry

*Wednesdays, 6:30-8:30 p.m.*

Our High School (grades 9-12) youth ministry meets upstairs in the Student Center. A typical night involves hanging out, eating Oreos or something awesome, listening to music, playing games, watching a video, discussing the important and the not so important things and wrapping up the evening with Highs and Lows. We welcome everyone (members and friends alike), and we encourage each other throughout the week. We have been known to go on trips, mission work, summer camp and Boundary Water Adventure journeys. High School life is too hard to do it alone, so we try and do it together. For more information, please contact Eddie Burks ([eddie@bethellutheranchurch.com](mailto:eddie@bethellutheranchurch.com)) or the Kitkos ([gkitko@sbcglobal.net](mailto:gkitko@sbcglobal.net)) directly.

### Baptism Class

This class is for parents who wish to have their child(ren) baptized. During this session, we explore what happens when we come to the font and what it means to be a disciple of Jesus Christ. We review the expectations placed on parents and the support they can expect to receive from the church.



### First Communion Class



Children in 4th grade and up learn about God's promises and the importance of Holy Communion.

Classes are held during the Discipleship Hour and culminate with the Rite of First Communion. Because First Communion was held in October of 2020, there will be no First Communion class this winter. For more information, speak with Pastor Al.

### Discovery Class

*Next class: April 11*

Are you a newcomer to faith or our church and curious about what God is doing here? Join us for an introduction we call "Discovery" to go deeper in your faith! The pastors and other key leaders will explore with you the basics of our Lutheran Christian faith and what it means to be a disciple here at Bethel. Childcare will be provided, if needed. Just let us know. Speak with one of the pastors if you are interested.



### Faith Stepping Stones

Bethel offers several "faith stepping stones" at significant points in a person's faith journey. These stones are intentional opportunities to grow deeper in faith and, as a person matures, to accept for oneself the faith she or he has received from parents and godparents.



# EDUCATION

**No Classes**  
**April 4 — Spring Break & Easter**

**Sundays from 10:00 a.m. - 10:55 a.m.**

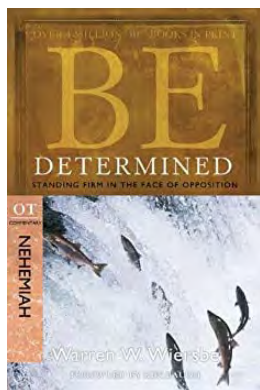
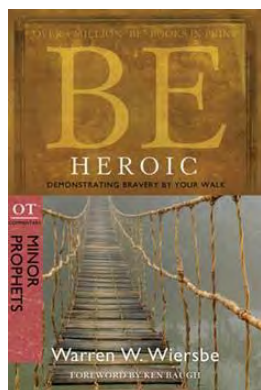
## ADULT CLASSES

**January 10 — March 21**

*Fellowship Hall*

### **Heroic Determination: Exile and Restoration of the Temple**

*Led by the Pastors and Mark Heckman*



50,000 Jewish exiles returned to Jerusalem in 537 BC to rebuild their temple and their lives. Their story is told in the Old Testament books of Ezra, Nehemiah, Haggai, and Zechariah. These books tell how God called various leaders to mobilize and equip His people to return to Jerusalem, rebuild its walls, and share His plan for their physical, emotional, and spiritual reconstruction. While viewed by Biblical scholars as the Minor Prophets, the insights and messages found in these Old Testament books are anything but minor. Come and prepare to be awed by our God!

**January 13 — March 24**

*Zoom Class*

### **Always Be Prepared to Give an Answer**

When questioned or challenged to explain why you believe Christianity is true can you provide convincing answers? Join us for a ten-week series where we will present and discuss reasons and historic facts to answer the most frequently asked questions about Christian beliefs. To register for this online Zoom class, please contact the church office (317-773-4315). A link will be sent to each participant.



## OCCASIONAL MINISTRY PRESENTATIONS

Throughout the year our Care Ministry and Missions Committee offer occasional presentations. Through its **Missions Committee** Bethel supports 30 various local, national, and international missions. In 2021, we plan to welcome several guest preachers and speakers. We will welcome **Jews for Jesus** on **March 24** as they offer their **Seder meal presentation**.

Watch for more details about this and other possible guest speakers in our weekly "Bethel Happenings."



## Ongoing Sunday Adult Classes

**Ask the Question — Chapel**  
*Led by Jason Pearson & Lu Olp*

The Church ought to be a safe place where we can bring our faith questions. In fact, a healthy faith questions and pushes for greater understanding, and a healthy church embraces those questions without feeling threatened or attacked. Join us as we discuss the questions you bring to the table.



## During the Week

**Sausage and Scripture** - Fellowship Hall  
Men's Breakfast and Bible Study is not currently meeting. For more information, please contact Jason Pearson (317-289-3986).

**Women on Wednesdays** - Meets on Wednesday mornings at 9:30 a.m. for Bible study. They are studying *The Letters of Paul* starting in February. Contact Mary Jo Mikulski with questions (260-403-5525).

### **Monthly Bethel Book Clubs for Women**

One group meets the **first Tuesday** of the month at 7 p.m. in various homes for fellowship and discussion. For more information, including that month's meeting location, contact Rise Helgemo (317-877-8416).

The second group meets **Saturdays** at 11:00 a.m. at Harbour Trees Golf Club. Each month's study includes lunch. For more information, contact Linda Crist (317-758-6748).

# NALC - Mission Connect



The North American Lutheran Church is Mission Driven. The challenge that we face in this digital age is trying to communicate in “real” time.

Finding our footing in [Psalm 107:2](#) — “Let the redeemed of the Lord tell their story” — **Mission Connect** was created as a tool that will help connect us as we are “Living on Mission, Telling our Stories.”

To receive a weekly text message update, text the word “**mission**” to **619-356-2910**. If you prefer to receive the weekly update by email, please visit: <http://2hoots.com/users/login/60>.

Each week you can expect to receive a new story, prayer request, opportunity, or update from the NALC Mission Office. You may also text a prayer request to the same number listed above to be lifted up by the NALC Prayer Network. Join us as we journey together down this road of discipleship and mission!

*Continued from page 11.*

However, I believe it’s a stretch to say that God **causes** someone to be born evil. Sinful, yes, but evil? Maybe I’m splitting hairs here but calling someone “evil” (for me) suggests they are actively engaged in evil behavior. While we all are **sinful** by nature, regardless of whether we act out that sinfulness, I don’t believe we are automatically **evil**.

Rather, in the waters of baptism God washes us clean from sin and heals our brokenness that exists with God. In God’s divine foreknowledge, He knows the outcomes of my choices and the trajectory of my life, whether it will be for good or for evil. But I don’t believe God **causes** that to happen. While God “makes his sun rise on the evil and on the good and sends rain on the just and on the unjust.” (Matthew 5:45, ESV), God treats all people equally, extending grace and mercy even when none is earned. You and I have the free will to make the choices we do, including the choice to believe or not believe. Without that, we could not genuinely love and follow God. We would be little more than puppets on a string, manipulated through life according to God’s whims.

Our evil behavior, then, is less a matter of God’s design as it is the combination of our circumstances and the accumulated consequences of our choices. That someone might make those negative choices while raised in the most advantageous circumstances with all those opportunities is an example of the prevalence of sin and brokenness of creation and its ability to continue its destructive path in the world. While the power of sin, death, and the devil has been defeated at the cross, the effects of its destruction will only be halted permanently when Christ comes again to make all things new (Revelation 21:5).

*“Marana-tha”* Our Lord, come! (1 Corinthians 16:22)

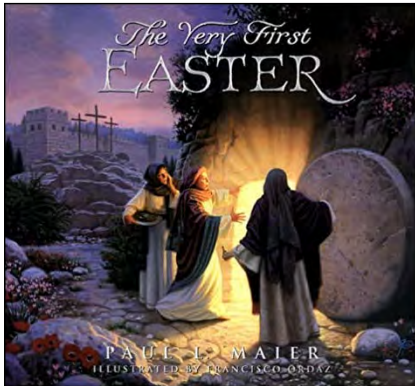
*Pastor Al*





# BOOKS OF INTEREST

**Reading level:  
Children – Adult**

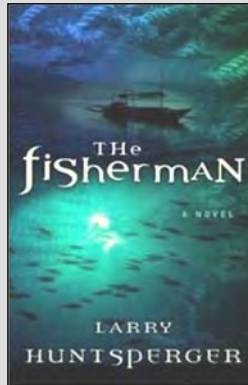


## THE VERY FIRST EASTER

*by Paul L. Maier*

The scene is the kitchen table of a family, Mom, Dad and 10-year old boy. They live in a secluded place out west where Chris has not been able to attend Sunday School, so he has lots of questions about Easter. His parents tell him the wonderful truth about Easter referring to the account in Luke to illustrate their narrative. There are many full page pictures and small illustrations throughout. This would be a good book to read as a family as Easter approaches; or an adult believer might use it to choose the essential elements of the truth about Easter, in the midst of Easter eggs, bunnies, baskets, and jelly beans that distract us all at Easter!

**Reading level:  
Teen – Adult**

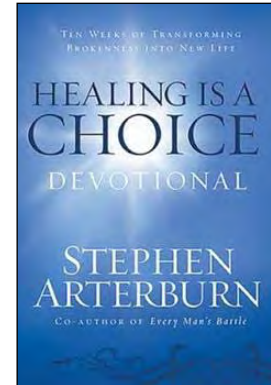


## THE FISHERMAN

*By Larry Huntsperger*

Often fictionalized accounts of biblical people add so much to the story that we begin to picture those additions as true. Not so with this novel. Larry Huntsperger has included only those events which Peter was truly part of according to the Biblical narrative. What he has added is how Peter may have felt about those events; what he may have been thinking. We see the effect Jesus had on Peter, from his initial calling through the resurrection. Most moving is the deepening of his friendship with Jesus, his understanding of who Jesus was, his joy at being one of the chosen. In this first-person account of Peter, Larry Huntsperger has also given us a unique look at Jesus himself.

**Reading level:  
Adult**



## HEALING IS A CHOICE

**Ten Decisions That Will Transform Your Life, and Ten Lies That Can Prevent You from Making Them.**

*By Stephen Arterburn*

You will notice first in Stephen Arterburn's self-help book that he advocates more than self-help. Healing starts with prayer to God, and we know with certainty that our healing comes from God. Arterburn's point is that we must not just sit back and wait for God to bring about healing. He outlines 10 choices crucial to receiving healing, and warns of the lies we tell ourselves that interfere with or prevent healing. We must act; we must set foot on the journey toward healing that God has for us and know that God will be with us throughout the journey.



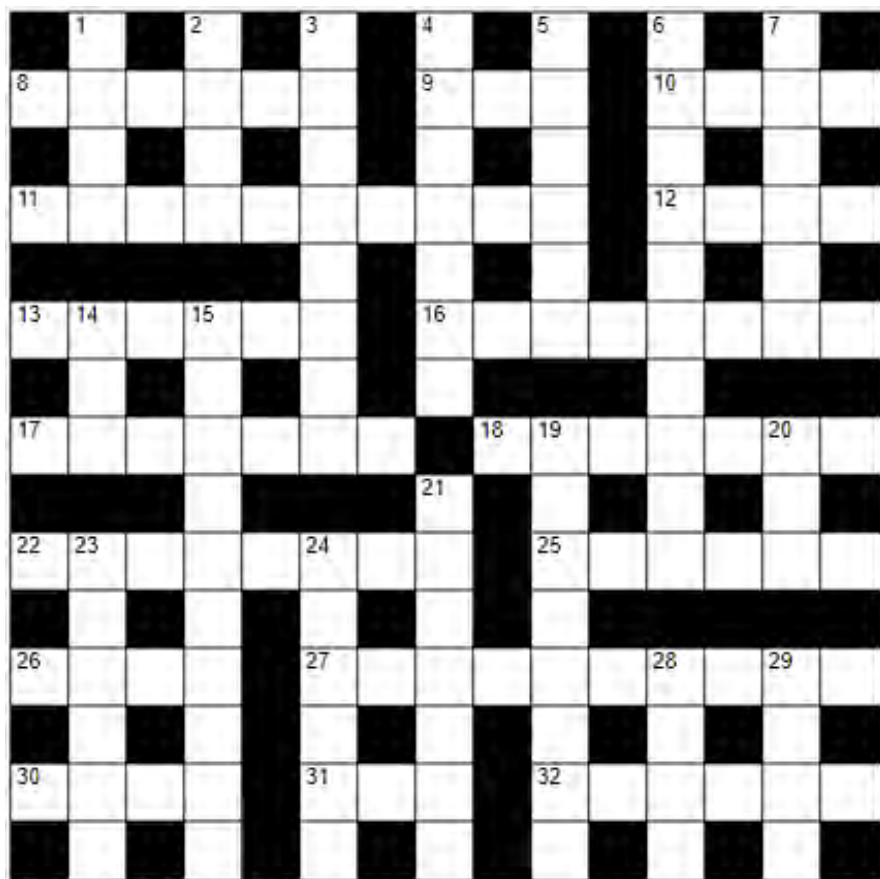
## CROSSWORD PUZZLE

### Across

- 8** Religious service (6)
- 9** Vessel (3)
- 10** Drive forcibly (4)
- 11** Christ does this for us (10)
- 12** Bethesda was the name of this (4)
- 13** Servant of a prophet (6)
- 16** One who leaves the straight and narrow path (8)
- 17** Check the money (7)
- 18** Fragrant offering; make angry (7)
- 22** Come out from among them (8)
- 25** Works with clay (6)
- 26** Main part of text (4)
- 27** Chucked it too far (10)
- 30** Treachery sealed with this (4)
- 31** Simon washed his (3)
- 32** Migratory grasshopper (6)

### Down

- 1** Standard for the tribe of Judah (4)
- 2** Brother of James; Hardy book (4)
- 3** Choice by vote (8)
- 4** Evening glow (7)
- 5** All sing the tune (6)
- 6** To reduce deficiency (10)
- 7** Take no notice of (6)
- 14** Look at (3)
- 15** Alternative Revelation (10)
- 19** Son of Jacob (8)
- 20** The blind will (3)
- 21** Regrets; Serpent (anag) (7)
- 23** Angels by another name (6)
- 24** Decorates (6)
- 28** Say it and you will be in danger of the council (4)
- 29** Cleanse (4)



Created by BiblePuzzles.com

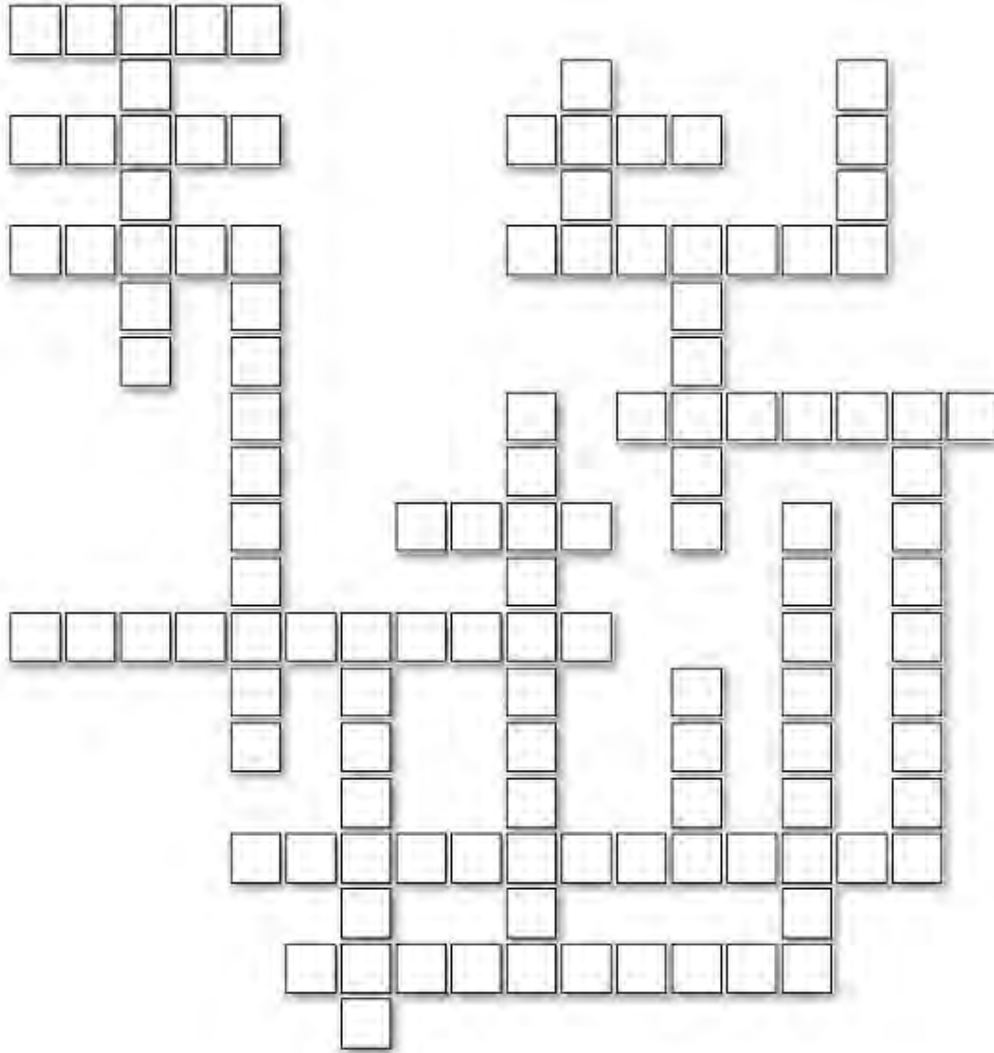


*Answers may be found on Page 22.*



## New Testament Books

Fit the words into this Bible Fill In puzzle!



© 2020 BiblePuzzles.com

### 4 LETTERS

ACTS  
JOHN  
JUDE  
LUKE  
MARK

### 5 LETTERS

JAMES  
PETER  
TITUS

### 6 LETTERS

ROMANS

### 7 LETTERS

HEBREWS  
MATTHEW  
TIMOTHY

### 8 LETTERS

PHILEMON

### 9 LETTERS

EPHESIANS  
GALATIANS

### 10 LETTERS

COLOSSIANS  
REVELATION

### 11 LETTERS

CORINTHIANS  
PHILIPPIANS

### 13 LETTERS

THESSALONIANS

Answers may be found on Page 22.

# CALENDAR

## LITURGICAL CALENDAR

Bethel Lutheran Church functions on a liturgical calendar with seasons and holy days. There are colors associated with each of the seasons and holy days. These are shown on this calendar and are reflected in the paraments in the sanctuary.

DAY	DATE	CHURCH CALENDAR
Sunday	2/7/21	5th Sunday after Epiphany
Sunday	2/14/21	Transfiguration Sunday
Wednesday	2/17/21	Ash Wednesday
Sunday	2/21/21	1st Sunday of Lent
Sunday	2/28/21	2nd Sunday of Lent
Sunday	3/7/21	3rd Sunday of Lent
Sunday	3/14/21	4th Sunday of Lent
Sunday	3/21/21	5th Sunday of Lent
Sunday	3/28/21	Palm Sunday
Thursday	4/1/21	Maundy Thursday
Friday	4/2/21	Good Friday
Saturday	4/3/21	Holy Saturday
Sunday	4/4/21	Easter
Sunday	4/11/21	2nd Sunday of Easter
Sunday	4/18/21	3rd Sunday of Easter
Sunday	4/25/21	4th Sunday of Easter

### Crossword answers from page 20

L	J	E	S	U	S	I
R	I	T	U	A	L	U
O	D	E	N	I	P	N
I	N	T	E	R	C	E
T	O	O	L	R		
G	E	H	A	Z	I	
Y	P	O	N			
R	E	C	O	U	N	T
C						
S	E	P	A	R	A	T
L	L	D	P	H		
B	O	D	O	V	E	R
H	P	R	N	A	A	A
K	I	S	S	N	E	T
M	E	S	S	I	A	H

## EVENTS & ACTIVITIES

February 1, 2021 — April 30, 2021

- Feb 3 Healing Service 7 p.m.
- Feb 14 **Transfiguration of Our Lord**
- Feb 16 Preschool Registration opens to Bethel members & current families
- Feb 17 Ash Wednesday Service 12:15 p.m. & 7 p.m.
- Feb 24 Midweek Worship 7-8 p.m.
- Mar 3 Midweek Worship 7-8 p.m.
- Mar 10 Midweek Worship 7-8 p.m.
- Mar 17 Midweek Worship 7-8 p.m.
- Mar 14 Daylight Savings Time—set clocks ahead 2 a.m.
- Mar 24 Midweek Worship 7-8 p.m.
- Mar 27 Easter Egg Hunt (*tentative date*)
- Apr 1 Maundy Thursday Service 7 p.m.
- Apr 2 Good Friday: Services @ 12:15 p.m. and 7 p.m.
- Apr 3 Holy Saturday Service 5:30 p.m.
- Apr 4 **EASTER**—7, 8, 9:30, & 11:11 a.m. services
- Apr 7 Healing Service 7 p.m.
- Apr 11 Discovery Class
- Apr 16-18 Preschool Silent Auction
- Apr 24 Arbor Day Spring Cleanup Day 1 p.m.
- Apr 25 Blood Drive 8:30 a.m.—12:30 p.m.



### Word Fit answers from page 20

T	I	T	U	S
I				
J	A	M	E	S
O				
P	E	T	E	R
H				
Y				
E				
V				
E				
L				
A				
T				
P	H	I	L	I
O				
N				
L				
I				
H				
T				
H				
E				
S				
S				
A				
L				
O				
N				
I				
A				
N				
S				
C				
O				
L				
O				
S				
S				
I				
A				
N				
S				
J				
L				
U				
K				
E				
D				
H				
E				
B				
R				
E				
W				
S				
O				
M				
C				
M				
A				
T				
T				
H				
E				
W				
P				
N				
G				
H				
A				
E				
L				
S				
J				
O				
T				
A				
I				
N				
H				
I				
N				
T				
H				
E				
S				
S				
A				
L				
O				
N				
I				
A				
N				
S				
M				
N				
C				
O				
L				
O				
S				
S				
I				
A				
N				
S				



# Events & Activities







## WEEKEND WORSHIP OPPORTUNITIES

### SATURDAY

5:30 p.m. – Casual Worship

### SUNDAY

8:45 a.m. – Classic Worship

10:00 a.m. – Christian Education Hour

11:11 a.m. – Praise Worship

*Communion will be celebrated at all services.*

## OTHER WORSHIP OPPORTUNITIES

### 1st WEDNESDAY OF THE MONTH

7:00 p.m. – Healing Service—ONLINE ONLY

### ASH WEDNESDAY— FEBRUARY 17

7:00 p.m. – Worship Service

### FEBRUARY 24, MARCH 3, 10, 17, & 24

7:00 p.m. – Worship Service

### HOLY WEEK

Palm Sunday, March 28 - 8:45 a.m. & 11:11 a.m.

Maundy Thursday, April 1 - 7 p.m.

Good Friday, April 2 - 12:15 p.m. & 7 p.m.

Holy Saturday, April 3 - 5:30 p.m.

### EASTER SUNDAY—APRIL 4

7 a.m. (Sunrise), 8 a.m., 9:30 a.m. & 11:11 a.m.

### **Bethel Lutheran Church**

20650 Cumberland Road

Noblesville, IN 46062

317.773.4315

[www.BethelLutheranChurch.com](http://www.BethelLutheranChurch.com)



**NALC**  
North American Lutheran Church.